
INSTALLATION INSTRUCTIONS

Original Issue Date: 6/01

Model: 33-99 kW

Market: Marine

Subject: **Fuel/Water Separator Kits GM15291-KP1 (33-65 kW Models) and GM17040-KP1 (70-99 kW Models)**

Introduction

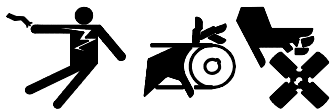
The fuel/water separator kit prevents water and sediment from entering the fuel system. Use these instructions to install the fuel/water separator kit.

Read the entire installation procedure and compare the kit parts with the parts list at the end of this publication before beginning installation. Perform the steps in the order shown.

Safety Precautions

Observe the following safety precautions while installing the kit.

⚠ WARNING

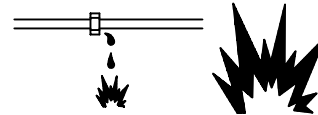


Accidental starting.
Can cause severe injury or death.

Disconnect the battery cables before working on the generator set. Remove the negative (-) lead first when disconnecting the battery. Reconnect the negative (-) lead last when reconnecting the battery.

Disabling the generator set. Accidental starting can cause severe injury or death. Before working on the generator set or connected equipment, disable the generator set as follows: (1) Move the generator set master switch to the OFF position. (2) Disconnect the power to the battery charger. (3) Remove the battery cables, negative (-) lead first. Reconnect the negative (-) lead last when reconnecting the battery. Follow these precautions to prevent starting of the generator set by an automatic transfer switch, remote start/stop switch, or engine start command from a remote computer.

⚠ WARNING



Explosive fuel vapors.
Can cause severe injury or death.

Use extreme care when handling, storing, and using fuels.

The fuel system. Explosive fuel vapors can cause severe injury or death. Vaporized fuels are highly explosive. Use extreme care when handling and storing fuels. Store fuels in a well-ventilated area away from spark-producing equipment and out of the reach of children. Never add fuel to the tank while the engine is running because spilled fuel may ignite on contact with hot parts or from sparks. Do not smoke or permit flames or sparks to occur near sources of spilled fuel or fuel vapors. Keep the fuel lines and connections tight and in good condition. Do not replace flexible fuel lines with rigid lines. Use flexible sections to avoid fuel line breakage caused by vibration. Do not operate the generator set in the presence of fuel leaks, fuel accumulation, or sparks. Repair fuel systems before resuming generator set operation.

Draining the fuel system. Explosive fuel vapors can cause severe injury or death. Spilled fuel can cause an explosion. Use a container to catch fuel when draining the fuel system. Wipe up spilled fuel after draining the system.

Installation Procedure

1. Remove the generator set from service.

- 1.1 Place the generator set master switch in the OFF position.
- 1.2 Disconnect the power to the battery charger, if equipped.
- 1.3 Disconnect the generator set engine starting battery(ies), negative (-) lead first.

2. Install the fuel/water separator filter.

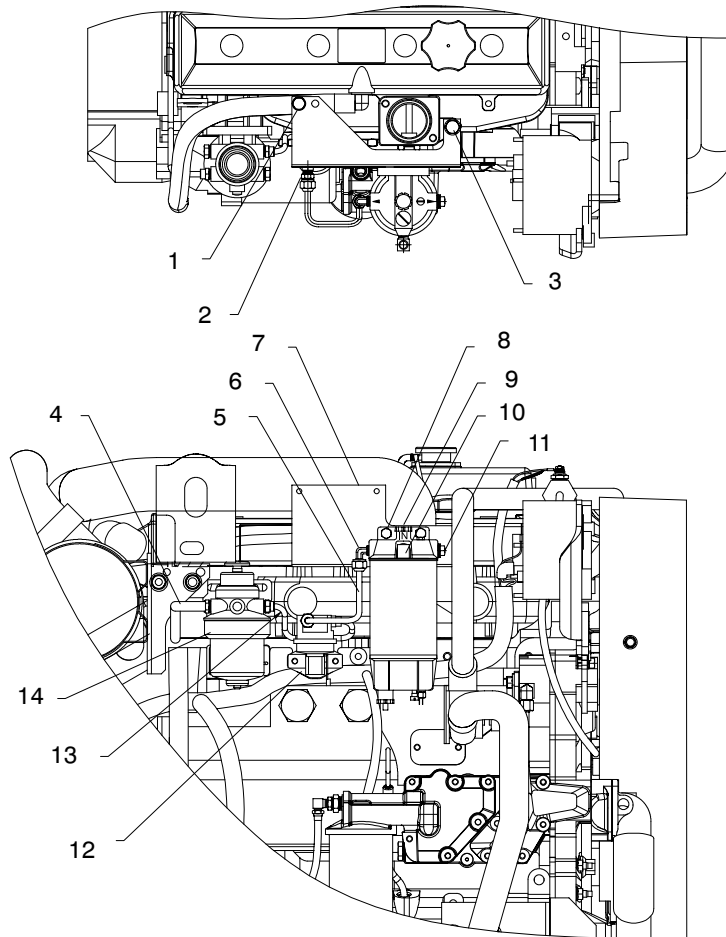
- 2.1 Disconnect the customer-supplied fuel inlet line.
- 2.2 Install the bracket (GM15507) to the engine block on the intake side using two screws (M933-10020-60 and M933-12025-60) and two washers (M125A-10-80 and M125A-12-80). See Figure 1, items 1, 3, and 7.
- 2.3 Attach the fuel/water separator filter (344343) to the bracket (GM15507) using two screws (M933-10035-60), two washers (M125A-10-80) and two nuts (M6923-10-80). See Figure 1, items 8 and 9.
- 2.4 Insert the elbow (X-555-1) into the inlet side of the fuel/water separator filter. See Figure 1, item 10.

- 2.5 Insert the elbow (X-447-6) into the outlet side of the fuel/water separator filter (344343) as shown in Figure 1, item 6.
- 2.6 Connect the fuel line (GM16074 for 33–65 kW models or GM17357 for 70–99 kW models) from the outlet side of the fuel/water separator filter to the inlet side of the fuel supply pump using a half-union fitting (X-296-6). See Figure 1, items 2 and 5.
- 2.7 Insert the pipe plug (X-75-2) into the fuel/water separator outlet. See Figure 1, item 11.
- 2.8 Connect the customer-supplied fuel inlet line to the inlet side of the fuel/water separator filter.

3. Restore the generator set to service.

- 3.1 Check that the generator set master switch is in the OFF position.
- 3.2 Reconnect the generator set engine starting battery, negative (-) lead last.
- 3.3 Reconnect power to the battery charger, if equipped.

Note: Bleed the fuel system according to the engine operation manual. If air is trapped in the fuel system, the engine will be difficult to start and/or operate erratically.



JR-250000-A

- | | |
|--|--|
| <ul style="list-style-type: none"> 1. Screw (M933-10020-60) and washer (M125A-10-80) 2. Half-union fitting (X-296-6) 3. Screw (M933-12025-60) and washer (M125A-12-80) 4. Location to fuel injection pump 5. Fuel line (GM16074 for 33-65 kW models or GM17357 for 70-99 kW models) 6. Elbow (X-447-6) 7. Bracket (GM15507) | <ul style="list-style-type: none"> 8. Screws (M933-10035-60 qty. 2), washers (M125A-10-80 qty. 2), and nuts (M6923-10-80 qty. 2) 9. Fuel/water separator filter (344343) 10. Elbow (X-555-1) 11. Pipe plug (X-75-2) 12. Location of fuel supply pump 13. Location of line from fuel supply pump 14. Location of fuel filter |
|--|--|

Figure 1 Fuel/Water Separator Assembly Drawing

Parts List

Fuel/Water Separator Kits

Kits: GM15291-KP1 and GM17040-KP1				
Qty.	Description	Common Parts	Unique Parts	
			GM15291-KP1	GM17040-KP1
1	Filter, fuel/water separator	344343		
1	Bracket	GM15507		
1	Line, fuel		GM16074	GM17357
3	Washer, plain (#10)	M125A-10-80		
1	Washer, plain (#12)	M125A-12-80		
2	Nut, hex (10 mm)	M6923-10-80		
1	Screw, hex cap (M10, 20 mm)	M933-10020-60		
2	Screw, hex cap (M10, 35 mm)	M933-10035-60		
1	Screw, hex cap (M12, 25 mm)	M933-12025-60		
1	Fitting, half union (1/2-20 x 1/4 in. NPTF)	X-296-6		
1	Elbow (1/2-20 x 1/4 in.)	X-447-6		
1	Elbow, street (1/4 in. NPTF)	X-555-1		
1	Plug, pipe (1/4 in. NPTF)	X-75-2		